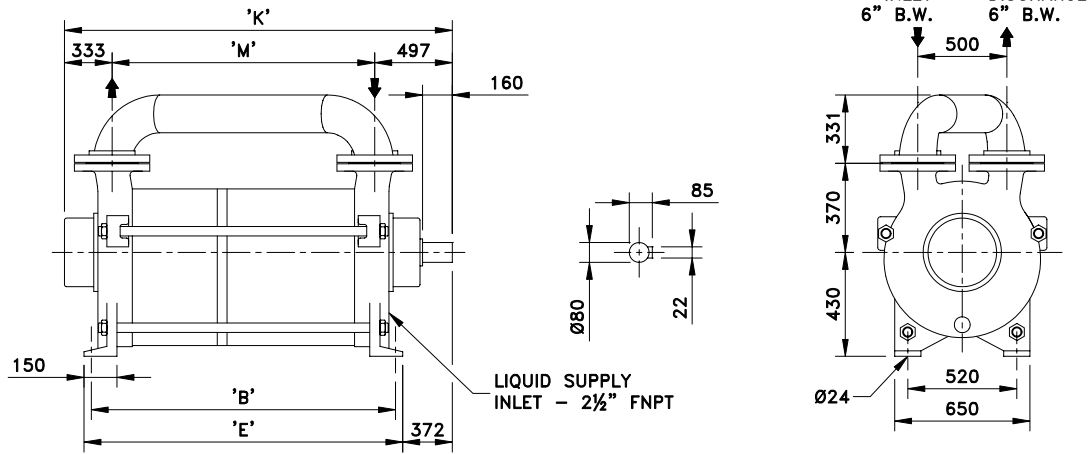
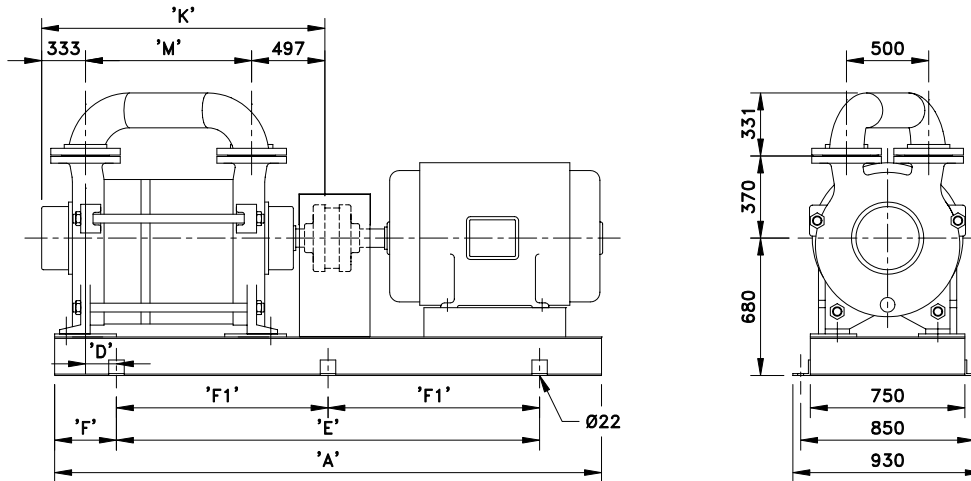


Bareshaft Construction with Mechanical Seal



PUMP TYPE	'B'	'E'	'M'	'K'	WEIGHT (KG.)
TRHA 150-2000/C	960	1080	1660	830	1330
TRHA 150-2600/C	1110	1230	1810	980	1480
TRHA 150-3100/C	1210	1330	1910	1080	1630

Base-Mounted Construction (Baseplate-Coupling) with Mechanical Seal



PUMP TYPE	4 POLES MOTOR HP	BASE PLATE	'A'	'D'	'E'	PUMP 'F'	'F1'	'K'	'M'	WEIGHT ¹ (KG.)
TRHA 150-2000/C	100	60F	2400	145	1800	300	900	1660	830	1805
	125			1945						
TRHA 150-2600/C	125	61F	2800	110	1900	450	950	1810	980	2095
	150			225						2245
TRHA 150-3100/C	150			250						2245
	215			315						2245

¹ Weight without motor
Dimensions in mm



Premier Fluid Systems
Canadian Home of Travaini Pumps

4161 Morris Dr. - Unit 5 * Burlington * Ontario * L7L 5L5 * Website: www.pfspumps.com
Tel: 1-800-461-2611 or 905-637-2611 * Fax: 905-333-4722 * email: info@pfspumps.com

DATE : JUNE 2006

No.: 7.45